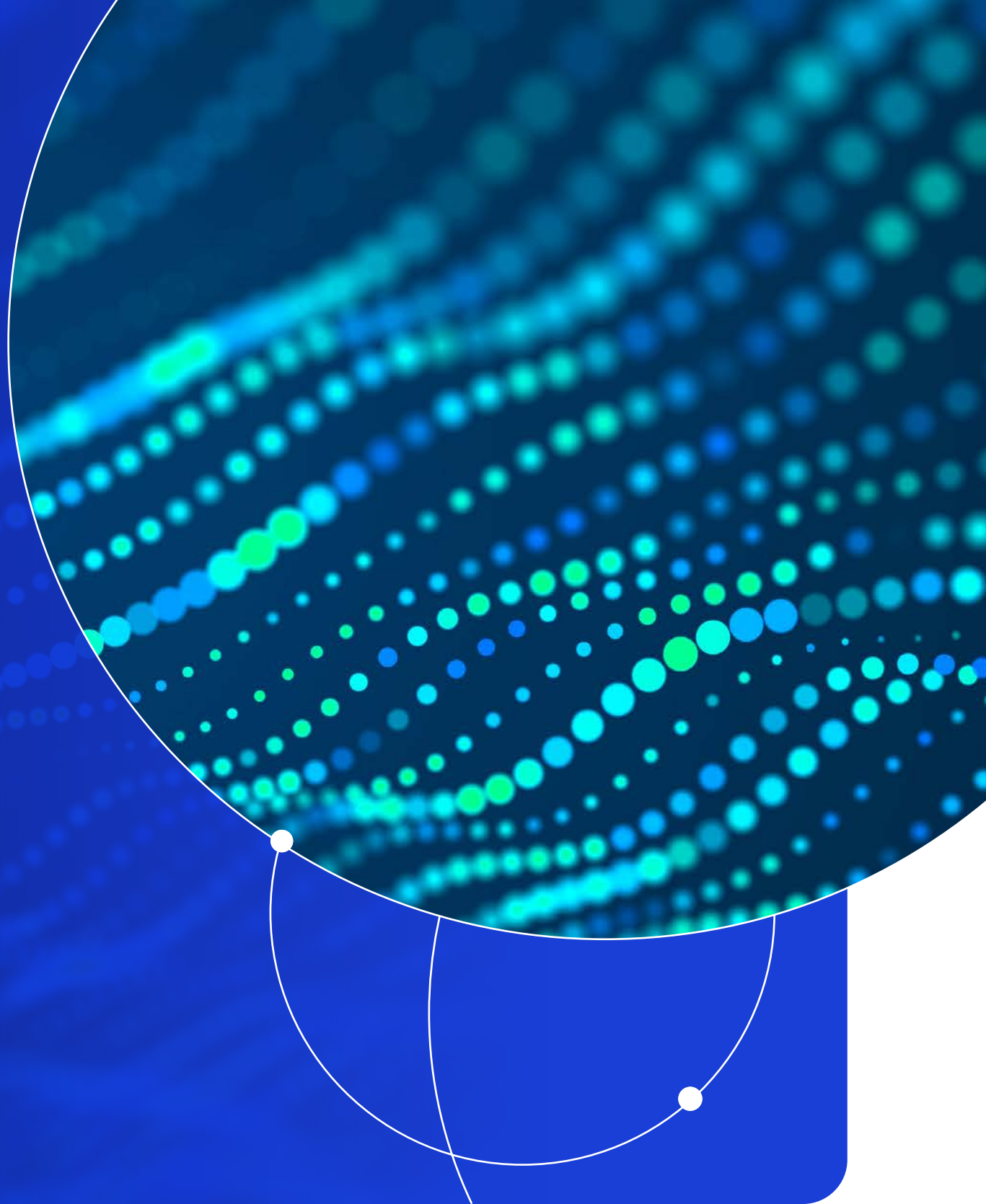




MSCI Analytics

Helping you find your edge

MSCI Analytics Summary for Hedge Funds



Contents



Dear Valued Clients,

In fast-moving markets, clients need risk analytics that remain stable and interpretable, even as portfolios rotate rapidly across instruments, strategies and counterparties. The challenge is maintaining confidence in signals when speed, leverage and complexity intersect.

Our recent enhancements focus on strengthening the production risk foundation you rely on, keeping analytics aligned with trading reality and decision-ready when timing matters most.

Key developments include:

- **More realistic enterprise risk assumptions**, with enhanced liquidity analytics, stronger counterparty risk governance and improved handling of financing and settlement dynamics.
- **Greater precision in rates, spreads and securitized risk**, supporting sharper curve expression, better hedge alignment and clearer stress-test interpretation.
- **Improved concentration and crowding detection**, helping surface hidden correlations and clustered exposures that may not appear in traditional reporting.

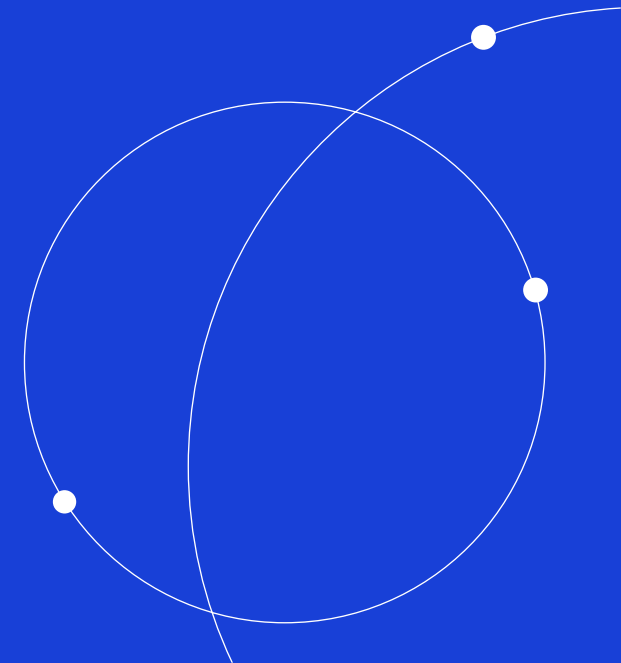
Across portfolio construction and systematic workflows, enhancements to downside-aware optimization and operational controls support faster iteration while maintaining discipline around risk, turnover and financing. In addition, we introduced the concept of explainable changes, embedding investigation directly into monitoring workflows so teams can move from signal to further investigation with fewer manual steps.

Our objective is to support your analysis when expressing investment views, through analytics that are fast, transparent and reliable under pressure.

Sincerely,

Jorge Mina

Managing Director – MSCI Analytics



Enterprise Risk and Performance

Hedge fund clients seek to maintain an exposure-coherent view of portfolio behaviour as positions, hedges, and financing change, often intraday and across multiple prime brokers. MSCI's enhancements **strengthened the production risk foundation** so that the signals traders and risk managers rely on remain stable and comparable even as portfolios rotate quickly across asset classes and instruments.

Our enterprise risk solutions delivered practical upgrades that map directly to hedge fund realities. **Liquidity analytics** were **improved** by incorporating FX settlement periods and enabling a cash-first liquidation approach, helping liquidity assumptions better reflect how cash buffers, settlement lags and margin dynamics play out in practice. We **improved counterparty exposure analytics**, aligning hedge

fund risk views with how bank counterparties assess exposure and financing, designed to support clearer dialogue and more consistent limits monitoring as positions and derivatives profiles change.

Our risk **engine advanced structured-product support** through enhancements such as Short Term Residential (STR) OAS curves for US MBS, updated STR prepay model capabilities, expanded Danish MBS coverage and metadata and an upgraded Intex library to broaden index coverage. For clients, the impact is enhanced transparency in risk and scenario results, improved confidence when using mortgages or structured instruments as hedges or relative-value legs, and a more reliable foundation for stress testing.

What's New



Enhanced liquidity realism with FX-settlement-aware analytics and cash-first liquidation assumptions.



Improved structured-product transparency with upgraded MBS curves, prepayment models and expanded Intex coverage.



Equity Analytics

On the data side, we **enhanced distribution via Snowflake** and API through the data preview functionality, providing clients with early visibility into refreshed data before it becomes available in production. **Improvements to factor model distribution** and cloud delivery reduced reconciliation work between research and production, helping teams spend more time on signal validation and less time resolving data mismatches. We also released the **China Equity model** suite to help funds operating global or Asia heavy books maintain a consistent factor framework across regions.

A key innovation was **expanded support for Peer Specific Risk** in next generation MSCI Equity Factor Models, identifying cluster risk among highly similar companies. For long short strategies, this improves hedge design, risk budgeting and crowding analysis, supported by data fixes that restored peer-similarity asset-pair counts to expected levels across global models.

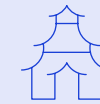
FactorLab descriptor enhancements broadened the signal library for alpha research and systematic risk monitoring. MSCI added **15 new Momentum and**

Macro descriptors, including multi-horizon Relative Strength signals and EUR/JPY interest rate and inflation sensitivities, bringing the total to more than 210 daily measures. A history refresh of 54 descriptors improved stability and expanded coverage. Daily descriptor returns and t-statistics are now available in Snowflake and via the Factor Insights API v3.1, with a data preview capability allowing systematic strategies to validate signal changes before production deployment.

Crowding signals within FactorLab, including short interest, residual volatility and book-to-price descriptors, are now **delivered at daily frequency** with full t-statistic reporting in Snowflake, improving reliability as an input to position sizing, risk budgeting and drawdown monitoring where overlapping systematic positioning can amplify deleveraging risk.

Front office automation also progressed, with API-based optimization profile creation helping teams standardize rebalancing logic across sleeves, alongside reporting and access improvements that reduce operational friction.

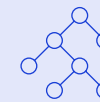
What's New



Expanded Peer Specific Risk to detect equity crowding and cluster exposure in long-short portfolios.



Improved front-office automation and scale via API-driven optimization profiles and high-volume reporting enhancements.



Strengthened global equity model coverage and cloud delivery, reducing research-to-production reconciliation.



Fixed Income Analytics

MSCI enhancements **strengthened** both the precision of **term-structure diagnostics** and the interpretability of **securitized and futures exposures** i.e., areas central to macro, relative-value and credit strategies.

A key step was expanding the representation of curve and sovereign spread risk through additional Key Rate Duration (KRD) factors and expanded European sovereign spread factors. This supports clearer post-trade review when risk managers need to explain whether a move came from parallel rates, curve shape, or sovereign spreads.

Securitized analytics were also strengthened, as BarraOne adopted the updated Agency MBS Model for Agency MBS and ARMs, delivering smoother risk profiles under OAS and rate shocks. The securitized universe was kept current with newer Agency RMBS generics, reducing model noise when structured products are used as hedge legs, relative-value instruments, or core exposures.

Interpretability for futures and spread drivers also improved. RiskManager and BarraOne introduced a

new Cheapest-to-Deliver methodology providing a more robust CTD treatment for rate hedging programs. **Fixed Income attribution** enhancements, including spread return decomposition across Credit, Government and MBS components, help isolate pure credit effects from non-credit spread drivers, supporting faster diagnosis when spreads move unexpectedly.

Expanding Key Rate Duration coverage from 9 to 14 tenors across 11 currencies, and European Sovereign Spread factors from 6 to 12 tenors across 10 markets, gives macro and relative-value desks finer control over curve positioning, hedge construction and post-trade attribution. An updated Colombian rate curve improves EM rate risk fidelity, and factor return files for the Fixed Income Factor Model are available through Models Direct for direct integration into proprietary systems and back-testing pipelines. Daily factor return files for FactorLab macro descriptors, covering EUR and JPY interest rate and inflation sensitivities, are also available in Snowflake and via the Factor Insights API, giving rates strategies direct programmatic access to daily signal data.

What's New



Increased precision of curve and sovereign risk expression with expanded KRD and European spread factors.



Strengthened securitized analytics with updated Agency MBS models and improved STR curve and prepay infrastructure.



Improved spread and futures explainability through enhanced CTD treatment and refined spread return decomposition.



Insights designed to support actionable views of risk and return

MSCI AI Portfolio Insights **expanded in-workflow investigation** by making AI Insights chat agent available across dashboards and limit views, allowing users to ask contextual questions without leaving the page they are reviewing. This supports faster hypothesis formation when exposures drift, concentrations build, or risk spikes unexpectedly. The platform also strengthened **transparency of AI-assisted outputs** by exposing the key supporting facts behind AI-generated insights, helping teams validate conclusions and document reasoning for internal challenge processes.

For multi-portfolio supervision, AI Portfolio Insights introduced an **Oversight dashboard** designed to monitor multiple portfolios in a consistent view. While hedge funds may not rely on board-style packs, they often need standardized internal runbooks and consistent oversight across pods,

and the ability to generate standard PDFs for dashboards supports repeatable internal reporting and exception management. **Limits monitoring** was also strengthened through enhanced configuration, the introduction of performance attribution limits, expansion of default QA limits to identify significant exposure and risk changes and default limits spanning market risk, liquidity risk and factor risk. This is particularly useful for hedge funds that want a common “risk language” across PMs while still allowing strategy-specific flexibility.

Risk and **factor analytics enhancements** improved daily usability, including fixed income risk analytics within the MAC Factor Risk dashboard and revamped performance attribution dashboards for flexible fixed income and MAC factor attribution.

Key Highlights



Speeds “what changed and why” investigation with AI-assisted analysis embedded directly in dashboards.



Enables consistent risk language across pods and strategies through standardized oversight and limits.



Improves daily decision-readiness with clearer factor, fixed income and attribution dashboards.



Innovation that enables you to build resilient and differentiated portfolios

MSCI's innovation helped clients express conviction across portfolio construction, instrument analytics and risk transparency while strengthening resilience when regimes shift.

In portfolio construction, MSCI Optimizer introduced **Expected Shortfall optimization**, enabling downside-aware objectives that align more naturally with hedge fund perspectives on tail risk than variance-only approaches. This can be particularly relevant for leveraged and long-short strategies where drawdowns matter as much as tracking error and where risk must be managed under non-linear constraints. Optimizer enhancements also continued to improve **robustness in real-world constraints**, supporting faster iteration when portfolios must be adjusted quickly under changing market conditions.

We also **strengthened analytics underpinning differentiated exposures** in rates, credit and securitized strategies. Expanded Key Rate Duration (KRD) and European sovereign spread factors improve the precision of curve and sovereign risk expression. **Securitized upgrades** including the adoption of newer version of BarraOne's Agency MBS Model and structured-product improvements in RiskManager, helped reduce model noise and improve confidence in hedging and scenario analysis. On the equity side, Peer Specific Risk provided a practical additional lens for detecting crowding and cluster exposures, supporting more resilient portfolio construction when many funds converge on the same themes. Together, these innovations support analysis of differentiated risk exposures with stronger control over tails, financing and unintended concentration.

Key Highlights



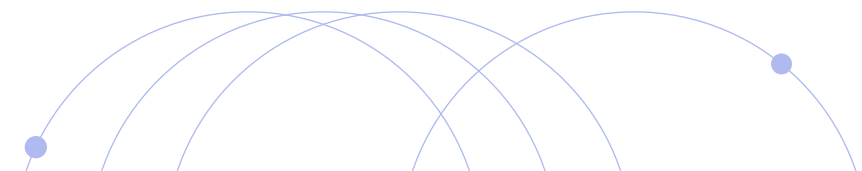
Supports downside-aware portfolio construction with Expected Shortfall optimization.



Improves hedge precision and relative-value analysis across rates, spreads and securitized markets.



Identifies hidden concentration and crowding risk through Peer Specific Risk and enhanced factor diagnostics.



Flexibility that enhances scale and unlocks efficiencies

Our solutions increased flexibility in how clients configure, automate and operationalize analytics across many books and strategies, helping reduce operational drag as organizations scale pods, mandates and what-if analysis volume.

BarraOne continued to **expand automation capabilities** through tools such as the Developer's Toolkit, enabling teams to run repeatable processes programmatically rather than relying on manual report setup. This matters for hedge funds that refresh risk frequently, run recurring stress tests and need consistent analytics definitions across multiple portfolios. Improvements that support clearer and more stable handling of complex instruments (such as CTD methodology for bond futures valued with RiskServer) are also designed to reduce the manual reconciliation burden that often falls on risk and operations when futures are used heavily.

RiskManager performance improvements, including optimizations related to Monte Carlo VaR computation and large-run throughput, support faster turnaround for recalculations, scenario refreshes and reporting cycles. Finally, through tools such as Asset Validation Service and Data Acquisition Platform, we empowered clients with faster access to clean, auditable data leading to enhanced operational efficiency. The net effect means less time spent fixing mapping issues and rerunning jobs, and more time available for risk review, idea evaluation and disciplined portfolio decision-making.

Key Highlights



Enables industrialized workflows via APIs, automation and high-volume processing.



Reduces operational friction with improved data handling, security resolution and performance optimization.



Supports rapid iteration across scenarios, sleeves and strategies without manual rework.



Purpose-built AI that embeds insight to deliver real client value

Our 2025 updates in AI enable clients with a **more decision-ready workflow** to understand where investigation happens, where risk is monitored and where conclusions can be validated and documented.

Within MSCI AI Portfolio Insights, **AI-assisted analysis** expanded to support multi-asset class factor risk, allowing users to ask plain-language questions and quickly explore what is driving risk across asset classes, how exposures are shifting over time and which holdings or factors are most influential. This is particularly helpful for funds running multi-strategy books where exposure drift can occur across asset classes and where teams need a fast path to a credible explanation. To support trust, MSCI improved how AI explains its conclusions by surfacing the key supporting facts behind an insight rather than presenting an opaque answer.

AI Insights chat agent was embedded directly inside dashboards, **enabling contextual investigation** without switching tools. Instead of exporting, reformatting and manually writing up explanations, teams can ask questions, review supporting facts and capture structured analytical interpretation within the same workflow. In fast-moving markets, this reduces investigation time, encourages more consistent interpretation across teams and supports better documentation of decision rationale.

Empowering client servicing with AI

Enabling responsible automation. Delivering maximum clarity, confidence and trust.



Sharper focus on what matters most

Automation and self-service accelerate standard requests, allowing Client Service teams to focus more time and expertise on complex, high-impact client situations.



Human judgment where it matters most

AI enhances consistency and scale, while Client Service teams provide interpretation, accountability and decision support in moments that require discretion and confidence.



Stronger trust through clearer explanations

By improving how insights are framed and supported, AI supports Client Service teams with explanations that are easier to validate, discuss and communicate across stakeholders.



Featured research: Powering strategy and innovation

In 2025, MSCI continued our **'In Focus'** series, offering timely perspectives on key market forces shaping investment risks and opportunities across both public and private markets. Throughout the year, the series explored multiple themes across both public and private markets. As the April tariff turmoil triggered heightened market volatility, our research teams responded with agility and depth, publishing **high quality analysis** and reflecting our continued focus on providing timely perspectives during periods of market uncertainty.

As market dynamics evolve, hedge funds are increasingly exposed to rapid shifts in positioning, liquidity and sentiment. Our analysis in **'Unraveling Summer 2025's Quant Fund Wobble'** examines how crowded factor exposures and sudden regime changes can amplify drawdowns across systematic strategies, highlighting the importance of transparency, concentration awareness and stress-ready risk frameworks in fast-moving markets. In parallel, rapid information flow is becoming a critical driver of short-term market behavior. Our research on **'Factoring in Earnings-Call Sentiment In Real Time'** explores

how natural-language signals from corporate communications can be incorporated into investment and risk processes, offering hedge funds an additional lens to assess market reactions as they unfold rather than after the fact.

Separately, our paper, **'Tracking Private Equity'** leverages MSCI's deal-level fundamental dataset to separate the portion of performance replicable in public markets from the unique value added by private equity. **'What's (in) the Deal?'** then examines how deal-level data enables investors to move beyond fund-level approximations in private-equity risk modeling. Together, these papers address a critical need: integrating private assets into a total portfolio risk framework.

Into 2026 and beyond, MSCI Research expects to focus more closely on the content relevant to Hedge Funds and continue to equip investors with clarity in decision-making and actionable insights on evolving investment themes and scenarios. We remain committed to providing frameworks, models and timely research that empower investors to move forward with confidence.

Investment Trends in Focus:

Key Themes for 2026

Factor Models at 50:

Innovation that Changed Investing

TINA, Meet TAWD:

Euro Sovereigns as a USD Alternative

Your Corporate-Bond Duration May Be Longer than You Think

By the numbers

\$50T+¹

Assets that are enterprise risk managed on MSCI Analytics platforms

99.97%²

Data accuracy rate for automated daily QA covering over 100k benchmarks and funds

150+³

vendor feeds, continuously tracked by AI, eliminating slippages

10x⁴

Scale of data collection and generation due to Data Acquisition Platform (DAP),

300%+⁵

improvement in productivity for model development and prompt generation due to DAP.

6x⁶

reduction in time required to build new models on emerging content sets due to DAP.

1,2,3,4,5,6 Source: MSCI; as of Feb 2026

Industry Awards and Recognition

2025 Chartis BuySideRisk50¹

Overall rank: #4

Category wins: Pension Funds, Asset Owners, Private Equity, Portfolio Construction and Optimization, Managed Service for the buy-side, Managed Services (Pension Funds, Asset Owners) and Index Data and Analytics

2026 Chartis RiskTech 100²

Overall rank: #20

Category wins: Risk as a Service (RaaS) and Managed Services

2025 Regulation Asia Awards for Excellence³

Winner: Best FRTB Solution

2025 WealthBriefingAsia Awards⁴

Best Portfolio Management Solution for MSCI Wealth Manager

2025 WealthTech Global 100 List - MSCI Wealth Manager⁵

2025 Wealth Management.com Industry Awards "Wealthies" Finalist

Category Finalist: Portfolio Analytics - MSCI Wealth Manager and Innovation New Applications - MSCI Similarity Score

Detailed information about the respective awards and their methodologies can be found:

1 <https://www.chartis-research.com/buy-side/7947442/buysiderisk50-2025-ranking-and-award-winners>

2 <https://www.chartis-research.com/market-analysis/7947415/risktech100%C2%AE-2026-ranking-and-award-winners>

3 <https://www.regulationasia.com/articles/regulation-asia-awards-for-excellence-2025-results-announcement>

4 <https://issuu.com/docs/bdee67f1456d7089b192131ae84c2d4d?fr=sODAzNjgzNzI3MDg>

5 <https://fintech.global/wealthtech100/>

6 <https://informaconnect.com/uploads/WMIA2025-WINNERS-09092025-v2-777bc691e312ec6229d4ed7742bcb75b.pdf>

Contact us

AMERICAS

US	+1 888 588 4567 (toll free)
Canada	+1 416 628 1007
Brazil	+55 11 4040 7830
Mexico	+52 81 1253 4020

ASIA PACIFIC

China	+86 21 61326611
Hong Kong	+852 2844 9333
India	+91 22 6784 9160
Malaysia	1800818185 (toll free)
South Korea	+82 70 4769 4231
Singapore	+65 67011177
Australia	+612 9033 9333
Taiwan	008 0112 7513 (toll free)
Thailand	0018 0015 6207 7181 (toll free)
Japan	+81 3 4579 0333

EUROPE, MIDDLE EAST & AFRICA

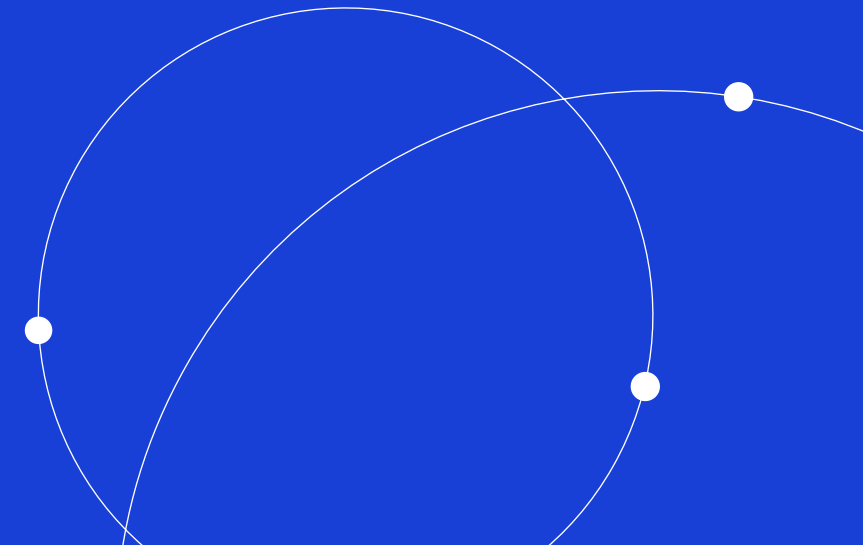
South Africa	+27 21 673 0103
Germany	+49 69 133 859 00
Switzerland	+41 22 817 9400
United Kingdom	+44 20 7618 2222
Italy	+39 025 849 0415
France	+33 17 6769 810

About MSCI

MSCI (NYSE: MSCI Inc.) strengthens global markets by connecting participants across the financial ecosystem with a common language. Our research-based data, analytics and indexes, supported by advanced technology, set standards for global investors and help our clients understand risks and opportunities so they can make better decisions and unlock innovation. We serve asset managers and owners, private-market sponsors and investors, hedge funds, wealth managers, banks, insurers and corporates.

To learn more, please visit

The process for submitting a formal index complaint can be found on the index regulation page of MSCI's website at: <https://www.msci.com/index-regulation>.



Disclaimer

The data, data feeds, databases, reports, text, graphs, charts, images, videos, recordings, models, metrics, analytics, indexes, ratings, scores, cases, estimates, assessments, software, websites, products, services and other information and materials contained herein or delivered in connection with this notice (collectively, the "Information") are copyrighted, trade secrets (when not publicly available), trademarks and proprietary property of MSCI Inc. or its subsidiaries (collectively, "MSCI"), MSCI's licensors, direct or indirect suppliers and authorized sources, and/or any third party contributing to the Information (collectively, with MSCI, the "Information Providers"). All rights in the Information are reserved by MSCI and its Information Providers and user(s) shall not, nor assist others to, challenge or assert any rights in the Information.

Unless you contact MSCI and receive its prior written permission, you must NOT use the Information, directly or indirectly, in whole or in part (i) for commercial purposes, (ii) in a manner that competes with MSCI or impacts its ability to commercialize the Information or its services, (iii) to provide a service to a third party, (iv) to permit a third party to directly or indirectly access, use or resell the Information, (v) to redistribute or resell the Information in any form, (vi) to include the Information in any materials for public dissemination such as fund factsheets, market presentations, prospectuses, and investor information documents (e.g. KIID or KIDs), (vii) to create or as a component of any financial products, whether listed or traded over the counter or on a private placement basis or otherwise, (viii) to create any indexes, ratings or other data products, including in derivative works combined with other indexes or data or as a policy, product or performance benchmarks for active, passive or other financial products, (ix) to populate a database, or (x) to train, use as an input to, or otherwise in connection with any artificial intelligence, machine learning, large language models or similar technologies except as licensed and expressly authorized under MSCI's AI Contracting Supplement at <https://www.msci.com/legal/supplemental-terms-for-client-use-of-artificial-intelligence>.

The intellectual property rights of MSCI and its Information Providers may not be misappropriated or used in a competitive manner through the use of third-party data or financial products linked to the Information, including by using an MSCI index-linked future or option in a competing third-party index to provide an exposure to the underlying MSCI index or by using an MSCI index-linked ETF to create a financial product that provides an exposure to the underlying MSCI index without obtaining a license from MSCI.

The user or recipient of the Information assumes the entire risk of any use it may make, permit or cause to be made of the Information. NONE OF THE INFORMATION PROVIDERS MAKES ANY EXPRESS OR IMPLIED WARRANTIES OR REPRESENTATIONS WITH RESPECT TO THE INFORMATION (OR THE RESULTS TO BE OBTAINED BY THE USE THEREOF), AND TO THE MAXIMUM EXTENT PERMITTED BY APPLICABLE LAW, EACH INFORMATION PROVIDER EXPRESSLY DISCLAIMS ALL IMPLIED WARRANTIES (INCLUDING ANY IMPLIED WARRANTIES OF ORIGINALITY, ACCURACY, TIMELINESS, SUITABILITY, NON-INFRINGEMENT, COMPLETENESS, MERCHANTABILITY AND FITNESS FOR A PARTICULAR PURPOSE) WITH RESPECT TO ANY OF THE INFORMATION. Without limiting any of the foregoing and to the maximum extent permitted by applicable law, in no event shall MSCI or any other Information Provider have any liability arising out of or relating to any of the Information, including for any direct, indirect, special, punitive, consequential (including lost profits) or any other damages, even if notified of the possibility of such damages. The foregoing shall not exclude or limit any liability that may not be by applicable law be excluded or limited.

The Information, including index construction, ratings, historical data, or analysis, is not a prediction or guarantee of future performance, and must not be relied upon as such. Past performance is not indicative of future results. The Information may contain back tested data. Back-tested performance based on back-tested data is not actual performance but is hypothetical. There are frequently material differences between back tested performance results and actual results subsequently achieved by any investment strategy. The Information may include "Signals," defined as quantitative attributes or the product of methods or formulas that describe or are derived from calculations using historical data. Signals are inherently backward-looking because of their use of historical data, and they are inherently inaccurate, not intended to predict the future and must not be relied upon as such. The relevance, correlations and accuracy of Signals frequently change materially over time.

The Information may include data relating to indicative prices, evaluated pricing or other information based on estimates or evaluations (collectively, "Evaluations") that are not current and do not reflect real-time traded prices. No evaluation method, including those used by the Information Providers, may consistently generate evaluations or estimates that correspond to actual "traded" prices of any relevant securities or other assets. Evaluations are subject to change at any time without notice and without any duty to update or inform you, may not reflect prices at which actual transactions or collateral calls may occur or have occurred. The market price of securities, financial instruments, and other assets can be determined only if and when executed in the market. There may be no, or may not have been any, secondary trading market for the relevant securities, financial instruments or other assets. Private capital, equity, credit and other assets and their prices may be assessed infrequently, may not be priced on a secondary market, and shall not be relied upon as an explicit or implicit valuation of a particular instrument. Any reliance on fair value estimates and non-market inputs introduces potential biases and subjectivity. Internal Rate of Return metrics are not fully representative without full disclosure of fund cash flows, assumptions, and time horizons.

The Information does not constitute, and must not be relied upon as, investment advice, credit ratings, or proxy advisory or voting services. None of the Information Providers, their products or services, are fiduciaries or make any recommendation, endorsement, or approval of any investment decision or asset allocation. Likewise, the Information does not represent an offer to sell, a solicitation to buy, or an endorsement of any security, financial product, instrument, investment vehicle, or trading strategy, whether or not linked to or in any way based on any MSCI index, rating, subcomponent, or other Information (collectively, "Linked Investments"). The Information should not be relied on and is not a substitute for the skill, judgment and experience of any user when making investment and other business decisions. MSCI is not responsible for any user's compliance with applicable laws and regulations. All Information is impersonal, not tailored to the needs of any person, entity or group of persons, not objectively verifiable in every respect, and may not be based on information that is important to any user.

It is not possible to invest in an index. Exposure to an asset class or trading strategy or other category represented by an index is only available through third party investable instruments (if any) based on that index. MSCI makes no assurance that any Linked Investments will accurately track index performance or provide positive investment returns. Index returns do not represent results of actual trading of investable assets/securities. MSCI maintains and calculates indexes but does not manage assets. The calculation of indexes and index returns may deviate from the stated methodology. Index returns do not reflect payment of any sales charges or fees an investor may pay to purchase securities underlying the index or Linked Investments. The imposition of these fees and charges would cause the performance of a Linked Investment to be different than the MSCI index performance.

Information provided by MSCI Solutions LLC and certain related entities ("MSCI Solutions"), including materials utilized in MSCI sustainability and climate products, have not been submitted to, nor received approval from any regulatory body. MSCI sustainability and climate offerings, research and data are produced by, and ratings are solely the opinion of MSCI Solutions. Other MSCI products and services may utilize information from MSCI Solutions, Barra LLC or other affiliates. More information can be found in the relevant methodologies on www.msci.com. MSCI Indexes are administered by MSCI Limited (UK) and MSCI Deutschland GmbH. No regulated use of any MSCI private real assets indexes in any jurisdiction is permitted without MSCI's express written authorization. The process for applying for MSCI's express written authorization can be found at: <https://www.msci.com/index-regulation>.

MSCI receives compensation in connection with licensing its indexes and other Information to third parties. MSCI Inc.'s revenue includes fees based on assets in Linked Investments. Information can be found in MSCI Inc.'s company filings on the Investor Relations section of msci.com. Issuers mentioned in MSCI Solutions materials or their affiliates may purchase research or other products or services from one or more MSCI affiliates, manage financial products such as mutual funds or ETFs rated by MSCI Solutions or its affiliates or are based on MSCI Indexes. Constituents of MSCI equity indexes are listed companies, which are included in or excluded from the indexes according to the application of the relevant index methodologies. Constituents in MSCI Inc. equity indexes may include MSCI Inc., clients of MSCI or suppliers to MSCI. MSCI Solutions has taken steps to mitigate potential conflicts of interest and safeguard the integrity and independence of its research and ratings.

MIFID2/MIFIR notice: MSCI Solutions does not distribute or act as an intermediary for financial instruments or structured deposits, nor does it deal on its own account, provide execution services for others or manage client accounts. No MSCI product or service supports, promotes or is intended to support or promote any such activity. MSCI Solutions is an independent provider of sustainability and climate data. All use of indicative prices for carbon credits must comply with any rules specified by MSCI. All transactions in carbon credits must be traded "over-the-counter" (i.e. not on a regulated market, trading venue or platform that performs a similar function to a trading venue) and result in physical delivery of the carbon credits.

You may not remove, alter, or obscure any attribution to MSCI or notices or disclaimers that apply to the Information. MSCI, Barra, RiskMetrics, and other MSCI brands and product names are the trademarks, service marks, or registered trademarks of MSCI or its subsidiaries in the United States and other jurisdictions. The Global Industry Classification Standard (GICS) was developed by and is the exclusive property of MSCI and S&P Dow Jones Indices. "Global Industry Classification Standard (GICS)" is a service mark of MSCI and S&P Dow Jones Indices. Terms such as including, includes, for example, such as and similar terms used herein are without limitation.

MSCI and its Information Providers may use automated technologies and artificial intelligence to help generate content and output incorporated in the Information.

Privacy notice: For information about how MSCI collects and uses personal data, please refer to our Privacy Notice at: <https://www.msci.com/privacy-pledge>. For copyright infringement claims contact us at dmca@msci.com. This notice is governed by the laws of the State of New York without regard to conflict of laws principles

MSCI



Clarity Drives Action